

MONTHLY DEPARTMENT REPORT
June 2022

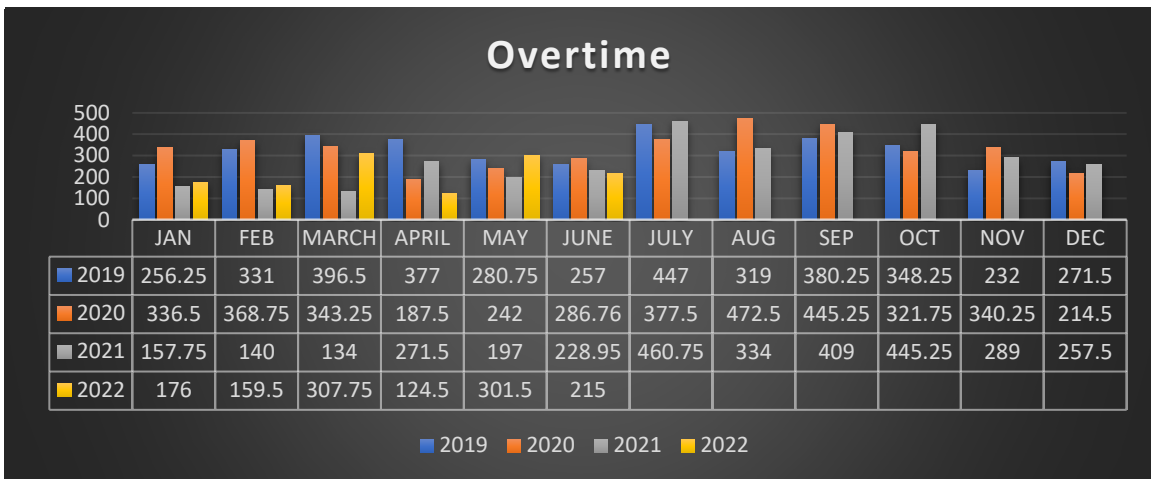
DEPARTMENT: HARTFORD POLICE DEPARTMENT

I.) MONTHLY STATISTICAL DATA**

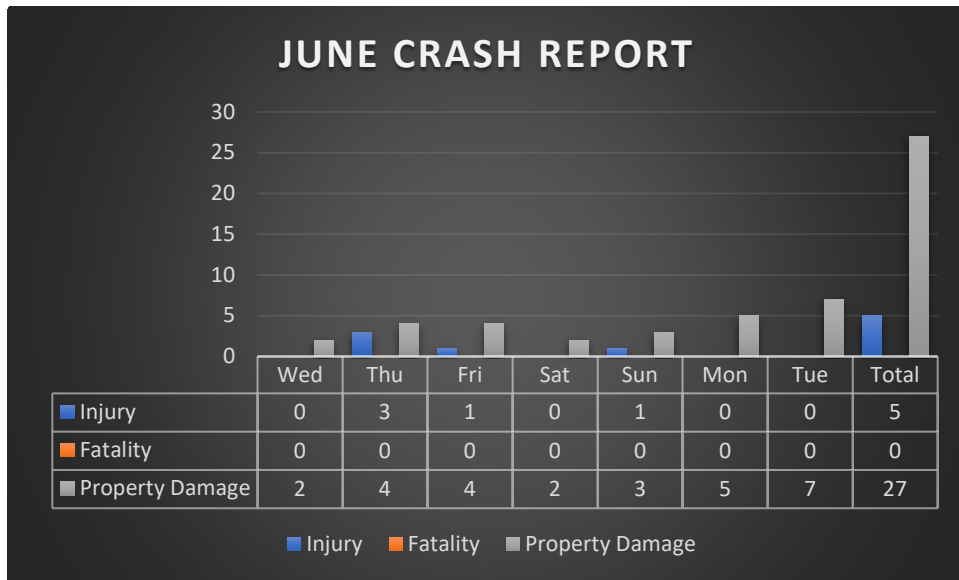
ACTIVITY MEASURE	2022	% OF 2021	2022 YTD TOTAL	% OF 2021	MAY JUNE '21	2021 YTD TOTAL
CALLS FOR SERVICE (JUNE)	1213	100%	7028	97%	1209	7249
COMPLAINTS FILED (JUNE)	165	92%	1074	94%	180	1148
WRITTEN WARNINGS (MAY)	201	85%	1109	90%	236	1230
TRAFFIC CITATIONS (MAY)	80	56%	502	59%	142	856
MUNICIPAL CITATIONS (MAY)	28	147%	158	75%	19	212
FIELD INTERVIEW CARDS (MAY)	0	0%	0	0%	1	2
ADULT ARRESTS (UCR DATA) (MAY)	18	69%	89	42%	26	213
JUVENILE ARRESTS (UCR DATA) (MAY)	1	11%	19	27%	9	71

SQUAD FLEET MILEAGE	JUNE 2022	% OF 2021	2022 YTD TOTAL	% OF 2021	JUNE 2021	2021 YTD TOTAL
SQUAD 1 (PATROL)	1653	141%	8603	135%	1169	6361
SQUAD 2 (PATROL)	2257	86%	13608	95%	2638	14275
SQUAD 3 (PATROL)	1860	97%	10324	109%	1914	9456
SQUAD 4 (PATROL)	2493	121%	7776	81%	2068	9558
SQUAD 5 (PATROL)	1627	132%	10661	99%	1230	10749
SQUAD 6 (ADMIN/POLICE AIDES)	351	64%	2929	148%	546	1981
SQUAD 7 (PATROL/SPECIAL PURPOSE)	600	293%	3378	150%	205	2257
SQUAD 8 (ADMIN)	1016	140%	4722	113%	725	4175
SQUAD 9 (PATROL/K-9)	1235	158%	7798	151%	780	5154
SQUAD 10 (ADMIN/PSLO)	179	1790%	569	5690%	10	10
TOTAL SQUAD MILEAGE	13271	118%	70368	110%	11275	63966
AVERAGE SQUAD MILEAGE	1327	118%	7037	110%	1128	6397

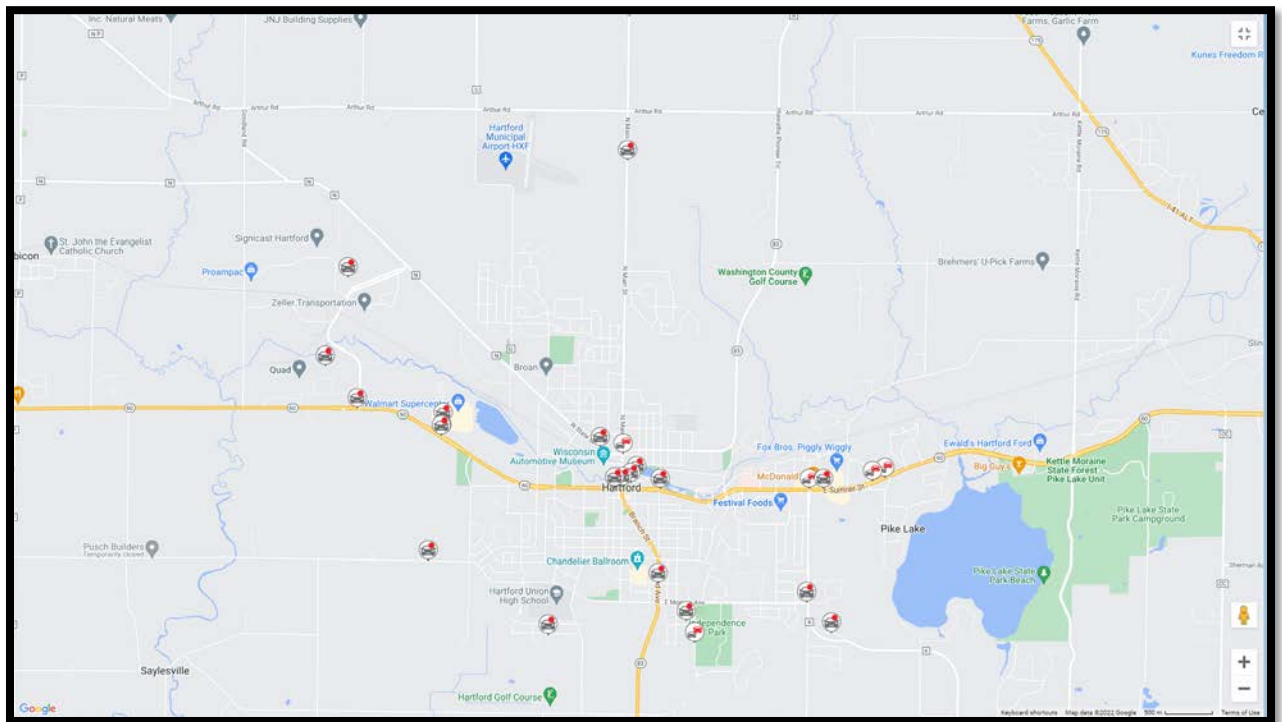
**See below for specific Wisconsin Incident Based Reporting crime data.



The month of June saw a decrease in overtime from the previous years.



During the month of June, officers investigated seventeen more vehicular crash incidents than the previous month. Five crashes were personal injury related, and twenty-seven resulted in property damage. They occurred on every day of the week with Tuesday being somewhat higher than other days for property damage related crashes and Thursday for injury related crashes. See below map for a snapshot of crash locations in June.



1.) CHIEF'S ACTIVITIES

- ◆ Attended various meetings
- ◆ Inspected the evidence room for WILEAG accreditation

- ◆ Meeting with Washington County regarding NG 911 services.

COMMENTS: I met with Dorothy Parks who made a generous donation to our canine program. The Parks family has been very supportive of the Police Department over the years, and it is greatly appreciated. Lieutenant Thickens and I also met with staff from the Sheriff's Department to discuss the future of 911. With the advancement of technology in this area, new ways of contacting emergency responders are being developed and are now incorporated into Next Generation 911 systems. Soon those in need of emergency services can text 911. They will also be able to send photos and videos to first responders.

DEPARTMENT TRAINING

- ◆ Department MILO Training: Construction site hammer/TZR Bar/SWAT Warrant – Patrol/Investigative Staff
- ◆ Arson Investigator – Kraemer
- ◆ Monthly G.O. Review 6.07-6.18 – Patrol/Inv. Staff
- ◆ SWAT Shoot – Deibert
- ◆ SWAT Team- Deibert
- ◆ K9 Decoy Training – Parker/Zens/Deibert
- ◆ Act 75 Searches – Patrol/Inv. Staff
- ◆ Iso Ex: Takedown Defense – Patrol/Inv. Staff
- ◆ Leap Conference – Moratz
- ◆ EMD – Obstructed Airway – Dispatch Staff

2.) *USE OF FORCE INCIDENTS*

During the month of June, there was a use of force incident reported. Flock camera captured a vehicle stolen out of Antioch Illinois travelling through the city. Officers were alerted and, upon locating the vehicle, began a pursuit as the vehicle fled. The operator of the stolen vehicle eventually crashed, and officers displayed their duty weapons, while performing a felony stop to apprehend the driver. Officers eventually took the driver into custody without further incident.

Respectfully Submitted,

Scott MacFarlan
Chief of Police



Crime Counts - Hartford PD
June 2022

Group A Crime Counts by Incident/Arrest Date

June 2022

<u>Crime Category</u>	<u>Offenses</u>	<u>Victims</u>	<u>Clearances</u>	<u>Adult Arrests</u>	<u>Juvenile Arrests</u>	<u>Total Arrests</u>
Total Crime	18	18	6	5	0	5
Crimes Against Persons	2	2	0	0	0	0
Murder & Non-Negligent Manslaughter	0	0	0	0	0	0
Manslaughter by Negligence	0	0	0	0	0	0
Sex Offenses	0	0	0	0	0	0
• Rape	0	0	0	0	0	0
• Sodomy	0	0	0	0	0	0
• Sexual Assault w/Object	0	0	0	0	0	0
• Fondling	0	0	0	0	0	0
Sex Offenses - Nonforcible	0	0	0	0	0	0
• Incest	0	0	0	0	0	0
• Statutory Rape	0	0	0	0	0	0
Assault Offenses	2	2	0	0	0	0
• Aggravated Assault	0	0	0	0	0	0
• Simple Assault	1	1	0	0	0	0
• Intimidation	1	1	0	0	0	0
Kidnapping/Abduction	0	0	0	0	0	0
Human Trafficking	0	0	0	0	0	0
• Human Trafficking, Commercial Sex Acts	0	0	0	0	0	0
• Human Trafficking, Involuntary Servitude	0	0	0	0	0	0
Crimes Against Property	10	10	3	3	0	3
Robbery	0	0	0	0	0	0
Burglary	0	0	0	0	0	0
Theft/Larceny	5	5	3	3	0	3
• Theft - Pocket-Picking	1	1	1	1	0	1
• Theft - Purse Snatching	0	0	0	0	0	0
• Theft - Shoplifting	3	3	2	2	0	2
• Theft From Building	0	0	0	0	0	0
• Theft From Coin-Op. Machine	0	0	0	0	0	0
• Theft From Motor Vehicle	0	0	0	0	0	0



Crime Counts - Hartford PD

June 2022

• Theft of Motor Vehicle Parts	0	0	0	0	0	0
• Theft - All Other Larceny	1	1	0	0	0	0
Motor Vehicle Theft	1	1	0	0	0	0
Stolen Property Offenses	0	0	0	0	0	0
Arson	0	0	0	0	0	0
Counterfeiting/Forgery	0	0	0	0	0	0
Fraud Offenses	3	3	0	0	0	0
• Fraud - False Pretenses	3	3	0	0	0	0
• Fraud - Credit Card/ATM	0	0	0	0	0	0
• Fraud - Impersonation	0	0	0	0	0	0
• Fraud - Welfare	0	0	0	0	0	0
• Fraud - Wire	0	0	0	0	0	0
• Fraud - Identity Theft	0	0	0	0	0	0
• Fraud - Hacking/Computer Invasion	0	0	0	0	0	0
Embezzlement	0	0	0	0	0	0
Extortion/Blackmail	0	0	0	0	0	0
Bribery	0	0	0	0	0	0
Destruction/Vandalism	1	1	0	0	0	0
Crimes Against Society	6	6	3	2	0	2
Weapon Law Violations	0	0	0	0	0	0
Prostitution Offenses	0	0	0	0	0	0
• Prostitution	0	0	0	0	0	0
• Prostitution - Assisting	0	0	0	0	0	0
• Prostitution - Purchasing	0	0	0	0	0	0
Drug/Narcotic Offenses	6	6	3	2	0	2
• Drug/Narcotics Violations	3	3	1	1	0	1
• Drug Equipment Violations	3	3	2	1	0	1
Gambling Offenses	0	0	0	0	0	0
• Gambling - Betting	0	0	0	0	0	0
• Gambling - Operating	0	0	0	0	0	0
• Gambling - Equipment Violations	0	0	0	0	0	0
• Gambling - Sports Tampering	0	0	0	0	0	0
Pornography	0	0	0	0	0	0
Animal Cruelty	0	0	0	0	0	0



Crime Counts - Hartford PD June 2022

Group B Arrests by Arrest Date

June 2022

<u>Crime Category</u>	<u>Adult Arrests</u>	<u>Juvenile Arrests</u>	<u>Total Arrests</u>
Total Crime	13	1	14
Bad Checks	0	0	0
Curfew/Loitering/Vagrancy	1	1	2
Disorderly Conduct	3	0	3
Driving Under the Influence	0	0	0
Family Offenses, Nonviolent	0	0	0
Liquor Law Violation	1	0	1
Peeping Tom	0	0	0
Trespass of Real Property	0	0	0
All Other Offenses	8	0	8

Counting Rules

Counts on this page are based on the month of the incident or arrest, rather than the month the incident was submitted. If the incident date is unknown, the report date is used. Counts are subject to change as data are updated.

Offense counts are calculated based on the number of offenses for each victim (per incident) for Crimes Against Persons and the number of unique offense types (per incident) for Crimes Against Property and Crimes Against Society. For burglary and motor vehicle theft, offense counts are based on the number of premises entered and the number of vehicles stolen, respectively.

Victim counts are calculated based on the number of victims connected to each unique offense type in an incident. For Crimes Against Persons, the number of victims will be equal to the number of offenses. Victims will be counted more than once if they are connected to multiple offenses.

Arrest counts are calculated based on the number of arrestees listed on a Group A or Group B incident. Each arrestee is counted only once per incident.

Arrests are categorized based on the specific Group A or Group B arrest code submitted by the agency, rather than the incident offense code. Since agencies only submit the most serious arrest charge for each arrestee on an incident, arrest counts are not indicative of the number of charges.

Incidents are cleared in one of two ways: by arrest or by exceptional means. Clearance counts are based on the number of offenses cleared in a given month regardless of when the offense occurred, and can therefore be greater than the number of offenses in a given month. In incident-based reporting, the first arrest on an incident, or an exceptional clearance, will clear all offenses associated with the incident.